



Norton Executive Benefit Program

A Premium Cyber Safety Solution for High-profile Individuals

The Executive Threat Landscape

Executives face a unique set of cyber risks, and the value of their information continues to grow as the digital landscape evolves. C-suite executives and other high-profile individuals have access to business-critical information and can act as conduits for confidential data, making them prime targets for cybercriminals looking to profit from insider knowledge.

Cybercriminals are leveraging compromised account credentials to access personal computers and company data — such as employee databases, email servers, and tax documents.



Cyberthreats present real challenges to executives and the organizations they represent

A cybersecurity strategy that keeps pace with evolving cyberthreats is critical for businesses and executives looking to stay ahead of a breach or cyberattack. Businesses that adopt Cyber Safety practices can help save time and money and may see strong returns in employee recruitment and retention.

88% of US corporate security professionals

report a dramatic increase in physical threat activity¹

56% of insider threat incidents

were caused by employee negligence²

The average cost of a data breach is

\$4.88 million³

Cyberattacks can expose executives and high-profile individuals, as well as their families, to risks that extend far beyond company networks

Top-level executives leave a digital footprint that is larger than most, making them more vulnerable to cyberthreats. Providing these executives and their families with an additional layer of security helps give them the protection and peace of mind they need to focus on their jobs, not cyber risks that could then lead to more severe outcomes.



Nearly 25% of CEOs and/or family members have received physical threats in 2021¹



39% of employees access corporate systems on personal devices⁴

Who can benefit from the Norton Executive Benefit Program?



Company Leadership

- C-Suite + Executive
- Leadership
- Business Owners
- Board Members



Professional Services

- Doctors
- Attorneys
- Consultants



Public Figures

- Politicians
- Athletes
- Celebrities

¹"2022 State of Protective Intelligence Report" by the Ontic Center for Protective Intelligence.

²2022 Ponemon Cost of Insider Threats Global Report.

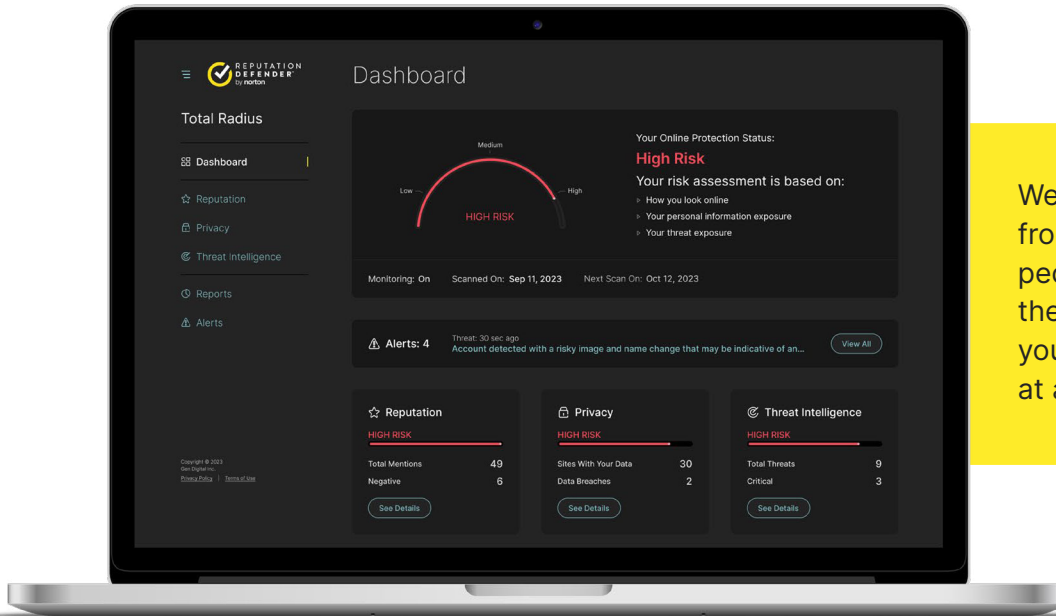
³IBM, Cost of a Data Breach Report 2024.

⁴Trend Micro, Head in the Clouds Report 2021.

Total Radius by ReputationDefender



Total Radius helps safeguard high-profile individuals against doxxing, data breaches, cyberstalking, bullying, identity theft, and financial risks.



We remove information from up to **900+** sites people-search sites and then monitor to make sure your data is not re-added at a later date.

Our Solution

Total Radius offers high-profile individuals unified protection against the wide range of reputation, privacy, and safety risks arising from their online presence.



One-Stop Shop: Total Radius helps mitigate threats to reputation, privacy, and physical safety, through both monitoring and remediation activities.



Custom Data Removals: By default we cover hundreds of online data removal scenarios – but if you do find something new, our team will determine the best way to mitigate it for you.



Fully Turnkey, Easy to Use: Set up and configure in mere minutes. Users simply log in and answer a few basic questions, then we start identifying threats and providing solutions.



Enterprise-Ready Dashboard: Everything you need to monitor, manage, and report on the digital threat landscape for your team is accessible through our intuitive dashboard.



White-Glove Service: A named account manager with expertise in mitigating privacy and reputation threats is available to answer questions, provide guidance, and carry out remediation activities on your behalf.

Norton™ Ultimate Help Desk

Norton Ultimate Help Desk provides remote, on-demand tech support that helps save time and frustration. It's also an easy way to add IT expertise and typically costs much less than an on-site service call or repair-shop work, covering unlimited devices.

Remote IT Support

We provide comprehensive support, from network setup to device diagnostics and troubleshooting, anytime executives need help, 24x7, 365 days a year.⁵

Device Setup and Maintenance

We'll get their devices working on the wireless network, connect computers to the printer, troubleshoot software problems, set up Microsoft Outlook, email and remedy operating system issues and computer crashes.⁶

Computer Tune Up

Our comprehensive inspection and repair services are designed to free up memory and optimize settings to help keep computers running like new. Norton techs can also help find and eliminate computer viruses.



LifeLock with Norton™ Benefit Premier Plus

Norton Executive Benefit Program members also receive the benefits of our LifeLock with Norton Benefit Premier Plus.

LifeLock Identity Theft Protection

Our proprietary technology monitors⁷ for fraudulent use of an employee's SSN, name, address, and birth date in applications for credit and services. The patented system sends alerts⁸ by text, phone, email, or mobile app when a potential threat is detected.

Norton Device Security

Multi-layered, advanced security helps protect device against existing and emerging malware threats, including ransomware, and helps protect private and financial information when employees go online.⁹

Norton Online Privacy

Protect devices on vulnerable connections through bank-grade encryption to keep information private. We also scan common public people-search websites for employees' info and help them easily opt-out.⁹

Helping executives — and the people they care about — **stay Cyber Safe.**

Please contact us today to get a quote and schedule a meeting to learn more about the Norton Executive Benefit Program.



⁵Global data based on an online survey of 11,379 adults in 14 countries among 24 brands conducted by Savanta: MSI on behalf of NortonLifeLock, October 2021.

⁶Based on an annual online consumer survey (n=1205) conducted for LifeLock (or NortonLifeLock) by MSI International, October 2021.

⁷We do not monitor all transactions at all businesses.

⁸Requires your device to have an Internet/data plan and be turned on.

⁹These features are not enabled upon enrollment. Member must take action to activate this protection.